

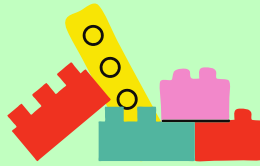
Virtual Reading and Recasting Study

Children with Language Disorder are invited to participate in a study to find out what therapy strategies work best at home with families, and what works best with an SLP.

- 8 to 10 weeks of evidence-based language treatment supports and strategies
- Families will be compensated \$15 to \$380
- Remote delivery - no in-person visits!

Request Information:

<https://redcap.link/SyntaxStories>



- Is your child between 4-9 years of age?
- Do they mostly hear and speak English at home and school?
- Do they have Language Disorder as a primary diagnosis? (i.e. not autism, intellectual disability, neurological disorder, etc)
- Do you have Internet and Computer access?
- Can your child participate in twice weekly language intervention?

To request more information please
Complete this Form:
<https://redcap.link/SyntaxStories>
Or Email Us: tell-lab@udel.edu



**Treatment Efficacy &
Language Learning Lab**